

Early Childhood Participation Dataset and the ILDS 2.0

February 2023

Agenda

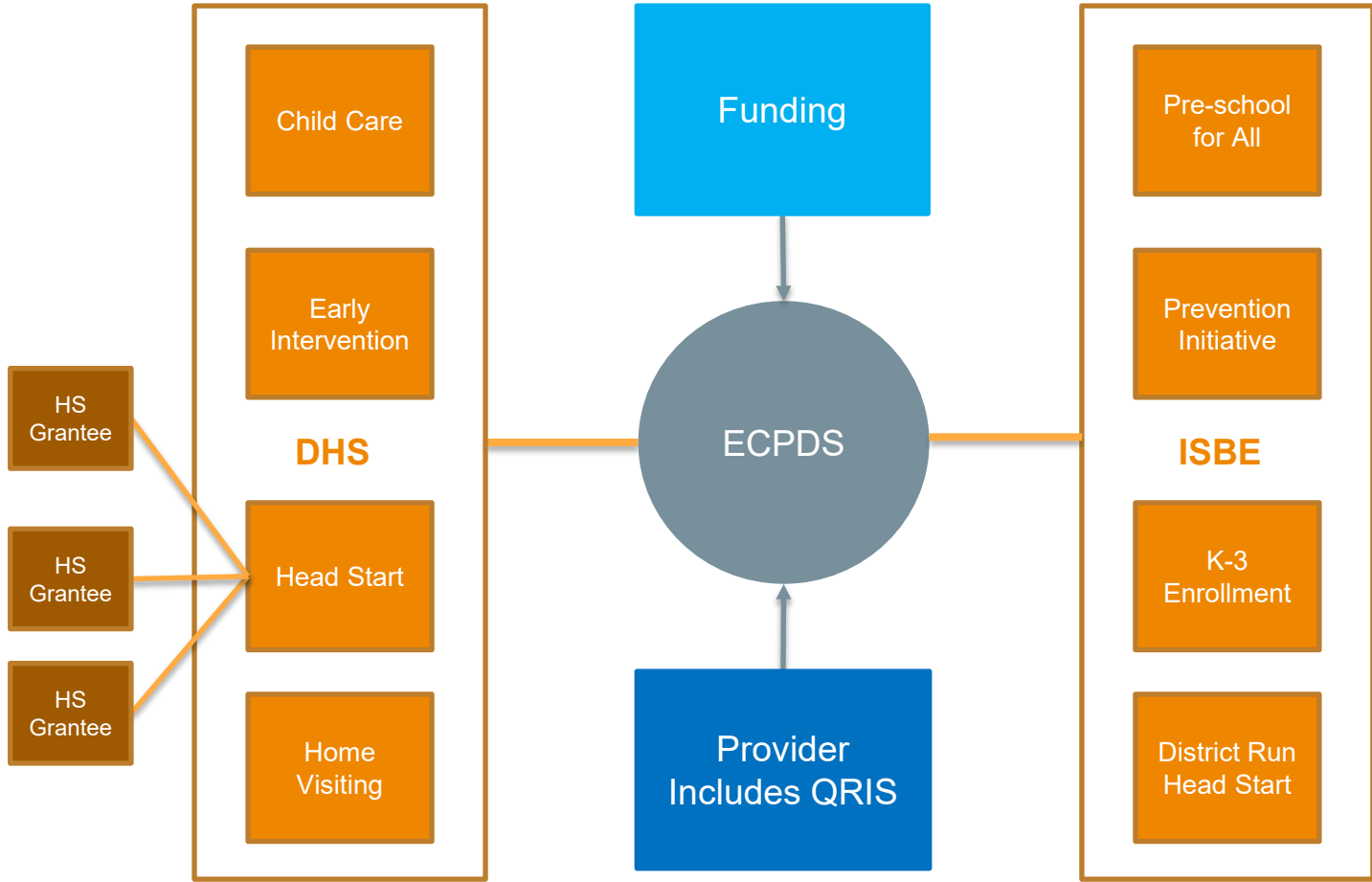
- ECPDS and ILDS Goals
- Current Progress
- Developing the ECPDS Front-end

ECPDS and ILDS Goals

ECPDS Project Goal

To develop a dataset across early childhood that allows for a variety of analyses and a holistic understanding of early childhood services for which children are enrolled. This dataset will enable tools for a variety of audiences including researchers, agency analysts, and the public.

Visual Project Goal



Challenges of Integrating EC Data

- Early childhood services are provided by multiple agencies
- Each agency provides multiple early childhood programs
- Different programs have different data systems
- Some of the data systems are internal to the state and some are external
- Answering holistic questions requires data to be matched across programs including children, families, educators and providers

ECPDS is Built Using the ILDS

The Illinois Longitudinal Data System (ILDS) provides the state with a platform to integrate data across agencies and time:

- Integrating Early Childhood data is a perfect example of a cross-agency longitudinal effort
- Key elements of this project include data management, data analysis, and data security
- The ILDS provides a system to streamline data integration across a variety of projects and multiple audiences

The ILDS is a Data Management System

The Illinois Longitudinal Data System (ILDS) is a system for managing data so that it can be readily accessed and integrated.

A system for:

- Centralizing the management and cataloging of data
- Linking data from different programs to each other
- Providing fine grained control of access to the data
- Providing a platform for analysis and development of visualizations

The ILDS is more than a Data Management System

Data sharing requires a variety of policies and legal agreements, so ILDS 2.0 is about more than just the data system:

- It includes a governance body in which participating agencies and partners meet and develop policy
- It includes the development of standardized legal agreements that can be used across projects
- And it includes the development of processes to manage user access and the development of data products

The ILDS and ECPDS Require a Holistic Data Management Architecture

This is
what we
want:



Traditional
Reporting



Analytics
Dashboards



Smart Data
Discovery



Storytelling/
Narrative



Visual
Exploration

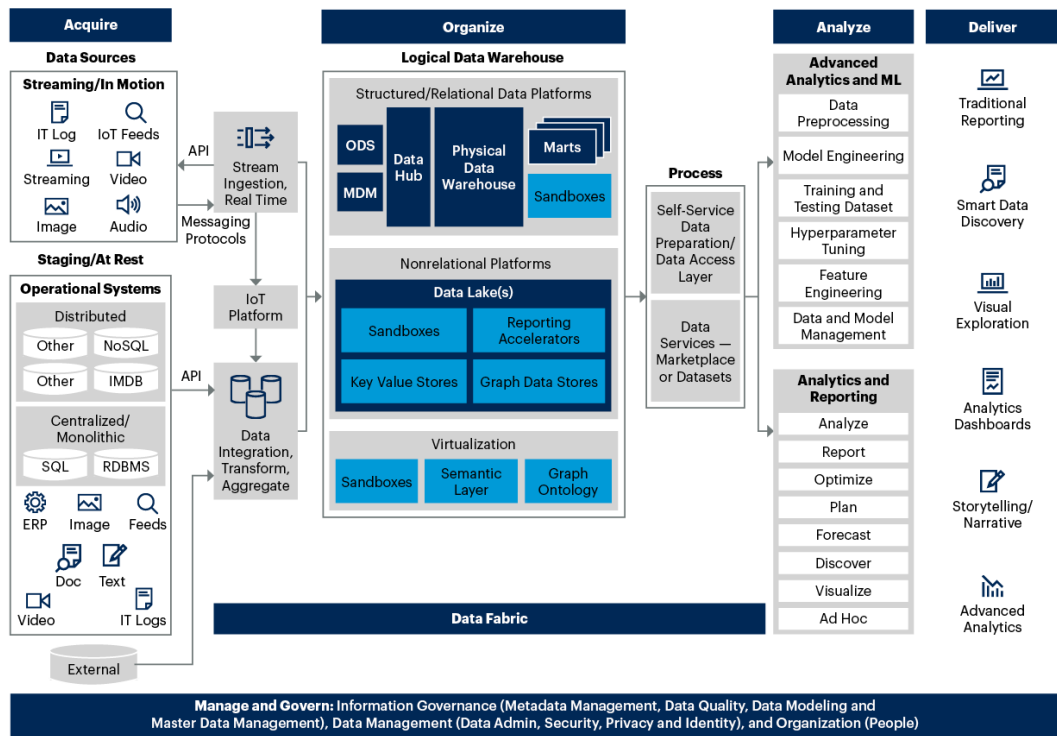


Advanced
Analytics

The ILDS and ECPDS Require a Holistic Data Management Architecture

This is what it takes:

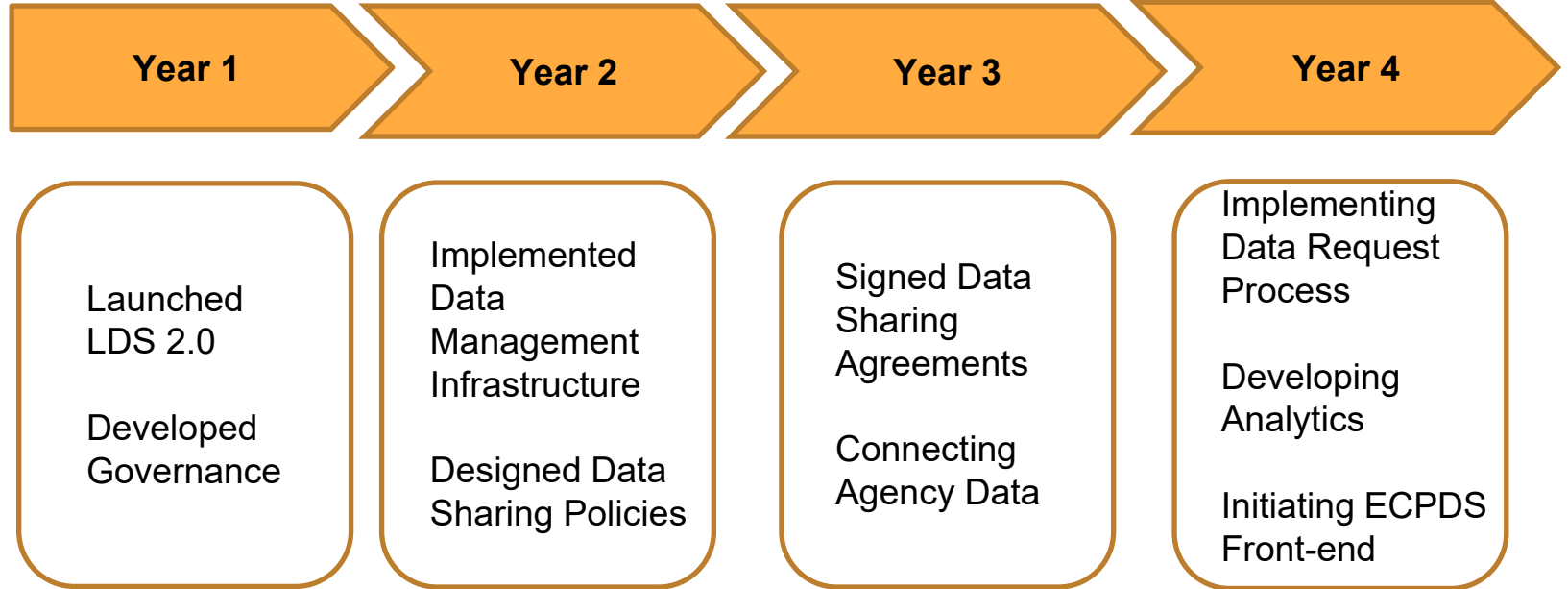
End-to-End Architecture for Data Management, Analytics and DSML

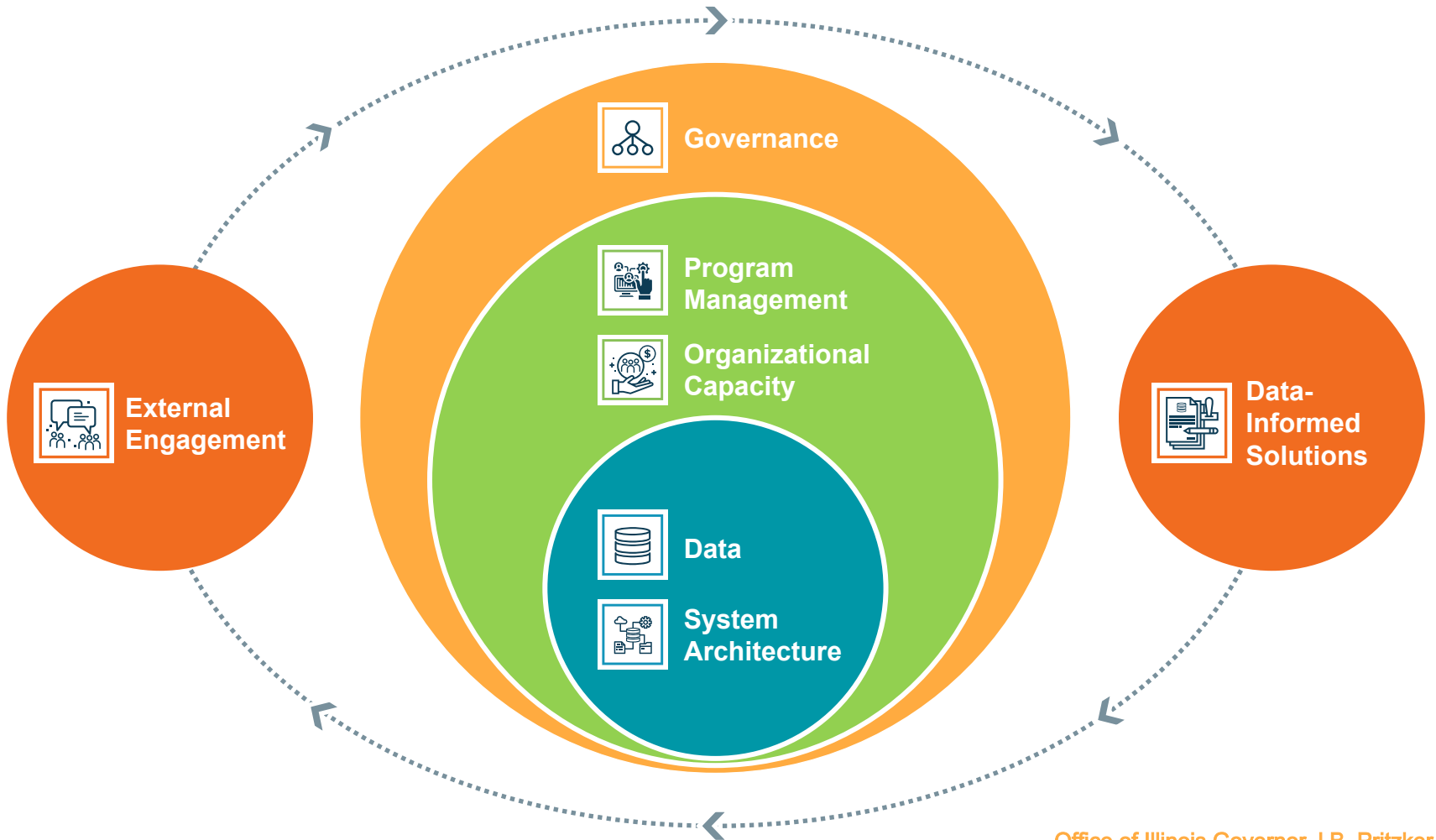


Source: Gartner
719542_C

Current Progress and Next Steps

ILDS and ECPDS Progress to Date





Current Research and Analytic Priorities

CURRENT

- What early childhood services do children receive 0 through 5?
- What combination of early childhood services do children receive 0 through 5?
- What is the breakdown of early childhood provision by race, ethnicity, geography, other factors?
- What paths do Illinois students take towards post-secondary credentials?
- What are key barriers for K-12 to post-secondary transitions?
- What is the relationship between those paths and workforce outcomes?
- What is the relationship between K-12 success and post-secondary and career paths?

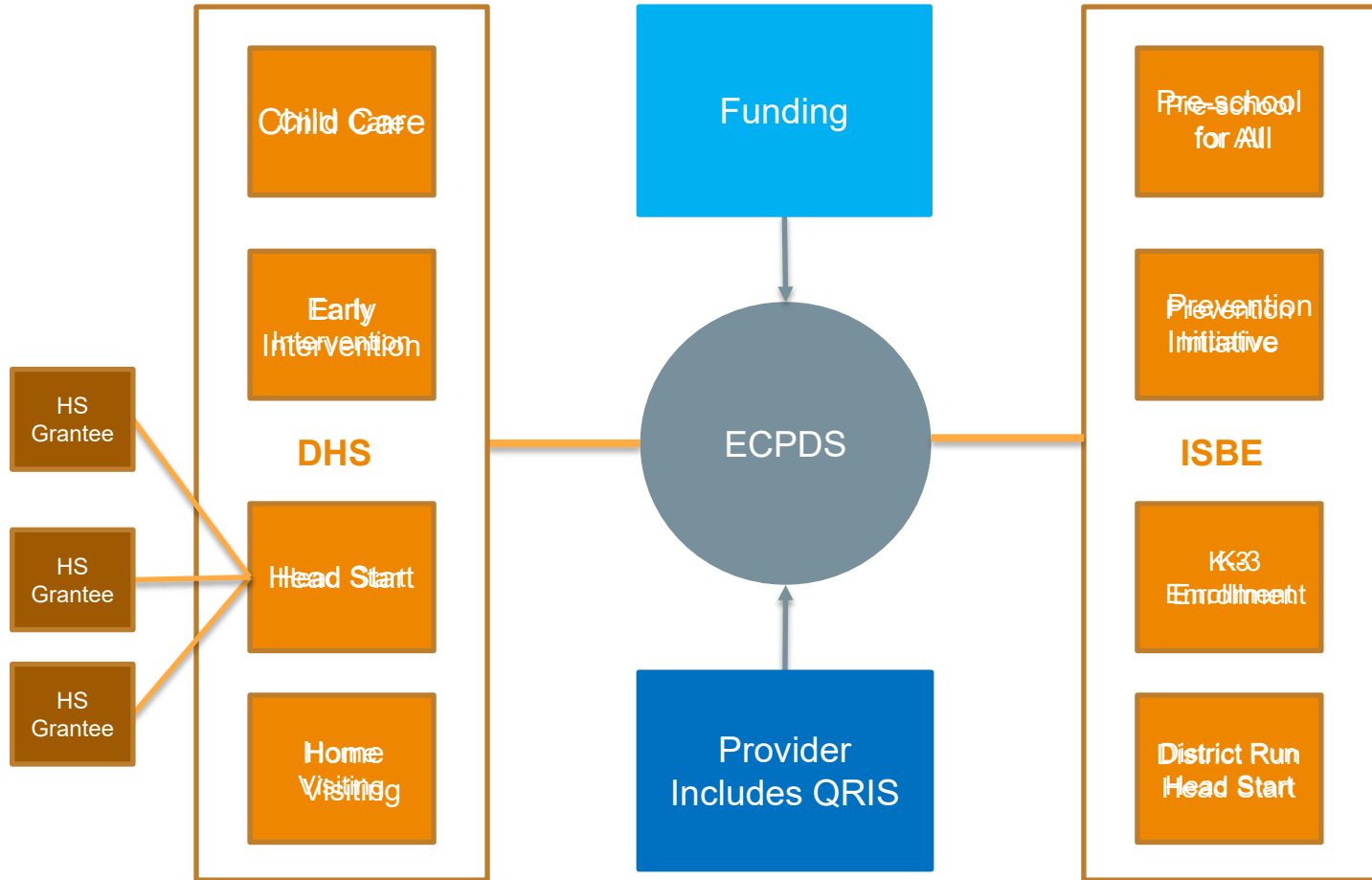
ON-DECK

- What early childhood services do high needs children receive in IL?
- What factors inhibit or promote school readiness (i.e. changing low-income status)?
- What factors inhibit or promote post-secondary success (i.e. changing financial aid status)?

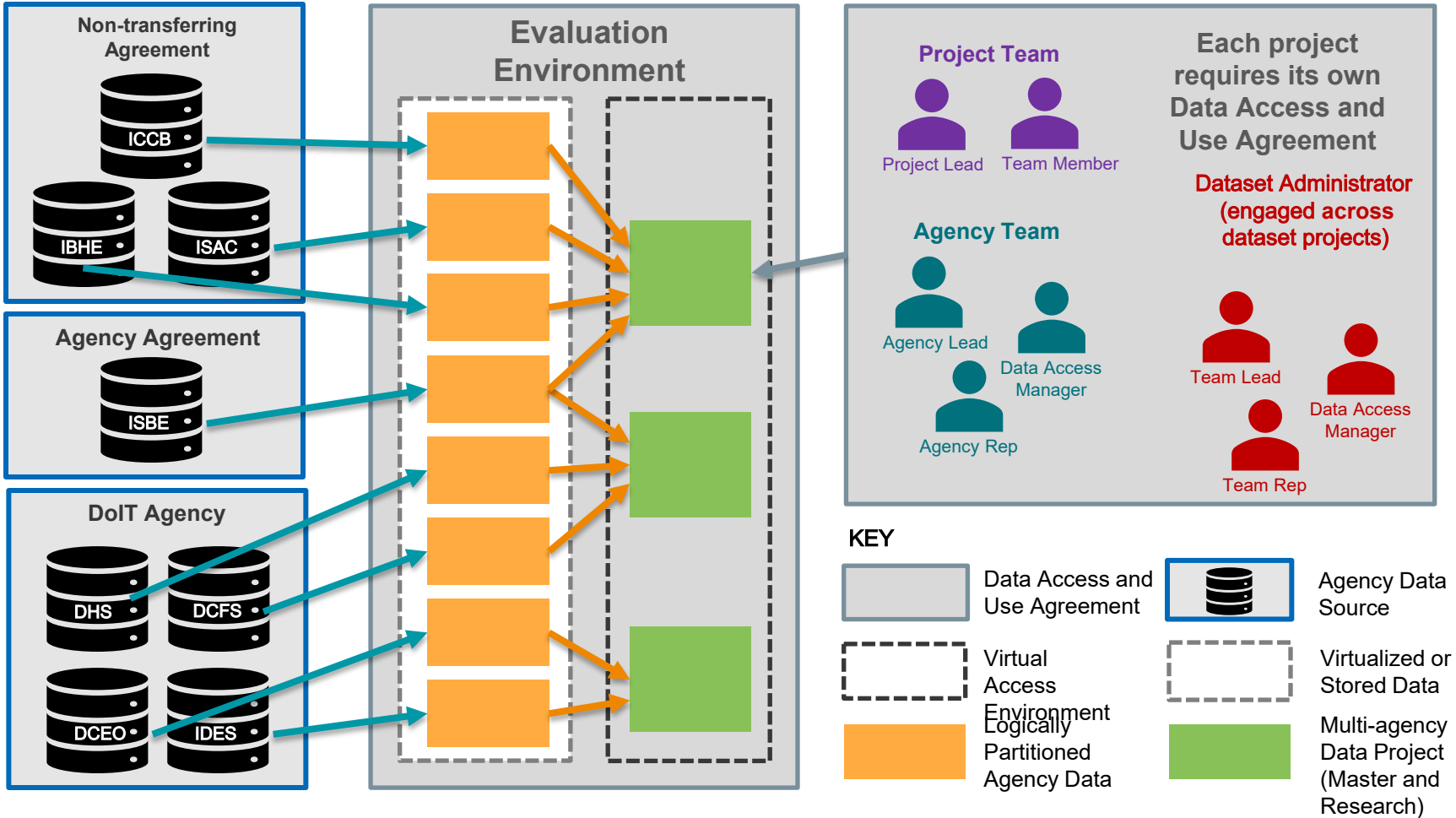
FUTURE

- What is the relationship between services children receive and K-12 outcomes?
- What paths do Illinois Educators (pre-k through higher education) take to become educators?
- Which paths lead to the most effective teachers?
- When do educators and prospective educators leave (and enter) the educator workforce pipeline?
- Workforce Supports
- Intergenerational Poverty

Visual Project Goal



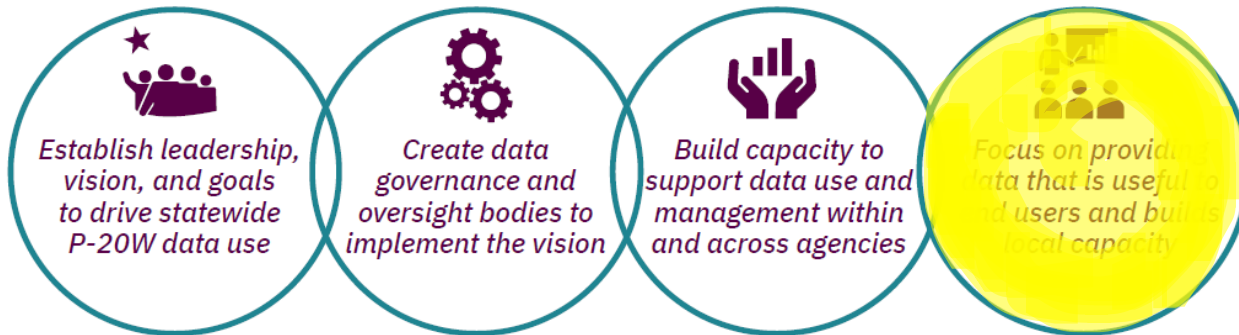
Legal and Technical Framework for Data Access within LDS 2.0 Architecture



Developing the ECPDS Front-End

Education and Workforce Data Task Force Recommendations

We believe that the following recommendations will position Illinois to better answer the key questions across the P-20W pathway:

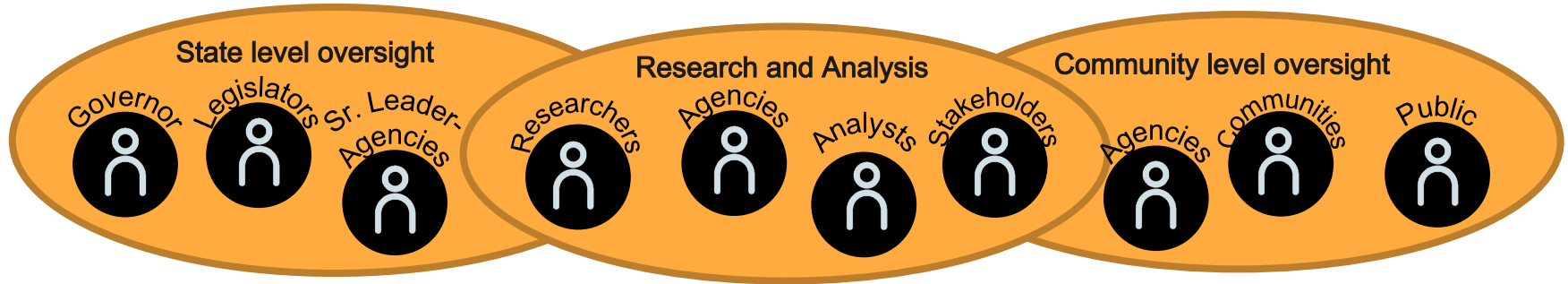


ECPDS Front-End Project Goal

Defining ECPDS' front-end functionality and building a road map to create the most value for children, families, communities, and other Illinois Early Childhood stakeholders.

Audiences and Goals

Data can be trusted to be an accurate, unduplicated count of B-5 children.



- High Level with Ease of Use:
 - Easy to consume
 - Easy to visualize at a glance (e.g., mapping)
 - Easy to discern next question
- Supports in understanding needs for funding, policy, state and federal reporting
- State-wide view with “drill down” as needed

- High Detail with Analytics
 - Detail data in spreadsheets or scatter diagrams to perform analyses
 - Ability to manipulate the data using products such as Tableau and pivot tables
- Ability to explore deeper questions requiring cross-functional data
- Supports in understanding needs for funding, policy, reporting at a more in-depth level

- High Detail with Ease of Use:
 - Minimal instruction
 - Easy to consume
 - Easy to visualize at a glance (e.g., mapping)
 - Easy to link data across programs
- Supports in understanding community needs such as funding, supply/demand, and menu of potential providers by area
- Capability to overlay and drill down for comparisons (e.g., birth rate trend to available providers by neighborhood)

Preliminary ECPDS Front-End Functional Framework

Goals:

Provide functionality within and across programs

Leverage existing partners and tools

Disaggregate by demographics and geography

Phase 1
Phase 2

Demographics

Enrollment

Providers

Capacity

Funding

Workforce

Initial Development Partners



Dawn Thomas, Exec Dir
Keith Hollenkamp, Asst. Dir



Christina Krasov, Consultant
Memusi Ntore, Fellow EdSys/NIU



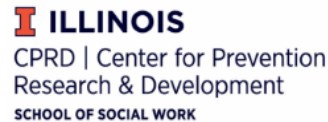
Bob Goerge, Sr. Research Fellow



Mitch Mraz, Dir



Theresa Hawley, Exec Dir



Nancy Flowers, Dir Research



Grace Araya, VP Community Development
Janet Vargas, Coach for IAFC

Working with Illinois Birth 2 Five Illinois and Agencies to validate functionality

Discussion