



# **Commission on Equitable Early Childhood Education and Care Funding**

Commission Meeting #3

February 11, 2020

---

# Introductions

# Today's Discussion - Goals

---

- Understand the **progress and plans of each Commission Working Group**
- Develop a **stakeholder engagement plan**
- Set **next steps**



# Today's Discussion - Agenda

---

Item	Time
Introductions, Charge, Work to Date	12:00-12:15pm
Updates from Working Groups	12:15-1:00pm
Stakeholder Engagement Planning	1:00–1:40pm
Next Steps & Meeting 4 Objectives	1:40-1:50pm
Public Comment	1:50-2:00pm

---

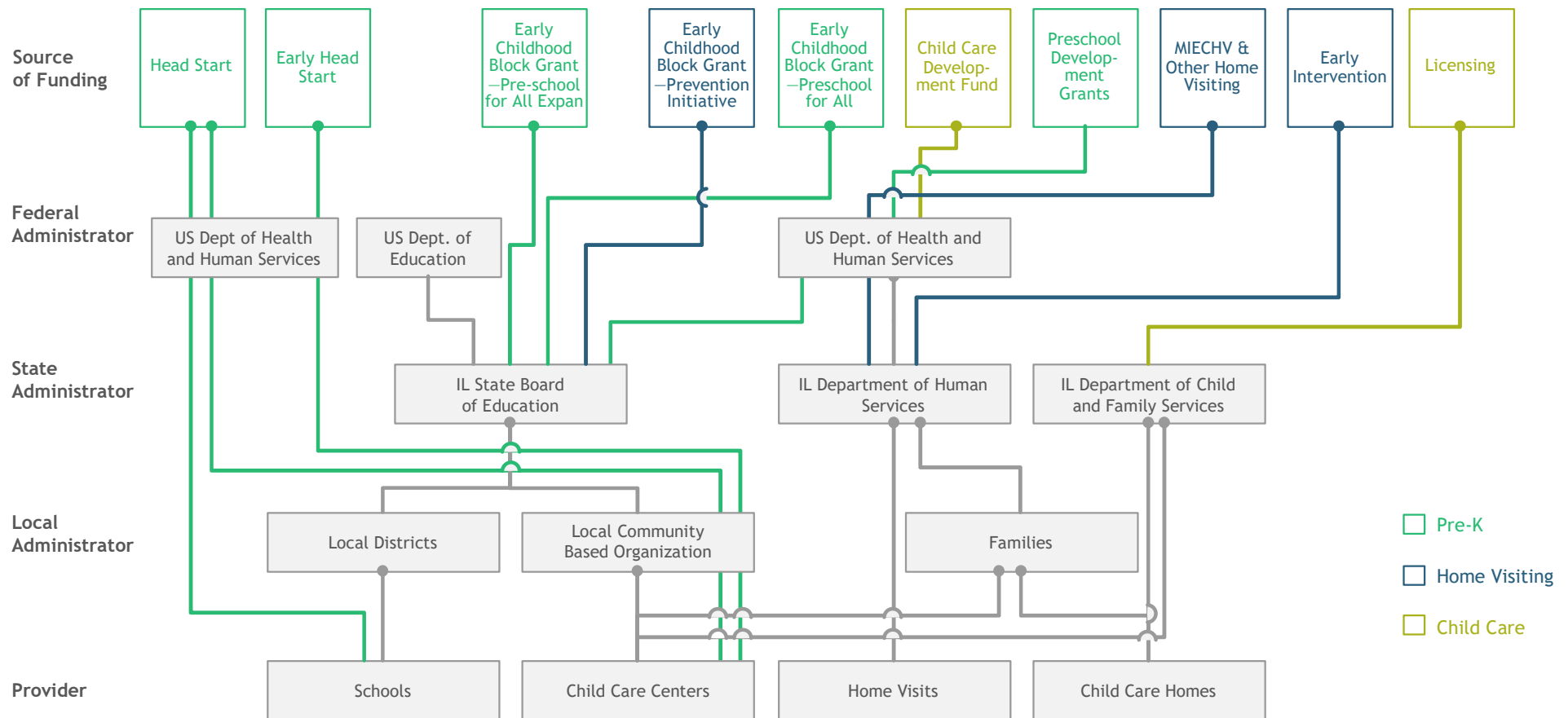
## Our Charge & Our Work Done to Date

# Access to High-Quality Early Childhood Education and Care Matters

---

- ✓ Child care subsidies are a critical work support
- ✓ Challenges with accessing stable ECEC are a significant drag on the economy
- ✓ Decades of research confirm the short- and long-term impact of high-quality ECEC
- ✓ Developmentally-appropriate instruction, well-designed curriculum, and well-qualified staff are key

# Fragmented system has led to significant challenges for families and providers



# Commission's Charge

---

“The Commission shall study and make recommendations to establish funding goals and funding mechanisms to provide equitable access to high-quality early childhood education and care services for all children birth to age five and advise the Governor in planning and implementing these recommendations.”





# Commission Deliverable

---

- **We need to know “the number.”** There is not enough revenue in the system to support a sufficient, stable supply of providers of high-quality ECEC – how much do we need?
- **We need to assess all funding mechanisms and the management and oversight structures of ECEC.**
  - How should we distribute funds?
  - Who should distribute and monitor the funds?
- **We need to determine how to implement our recommendations.**
  - How will we reach our recommended end state, and over what period of time?

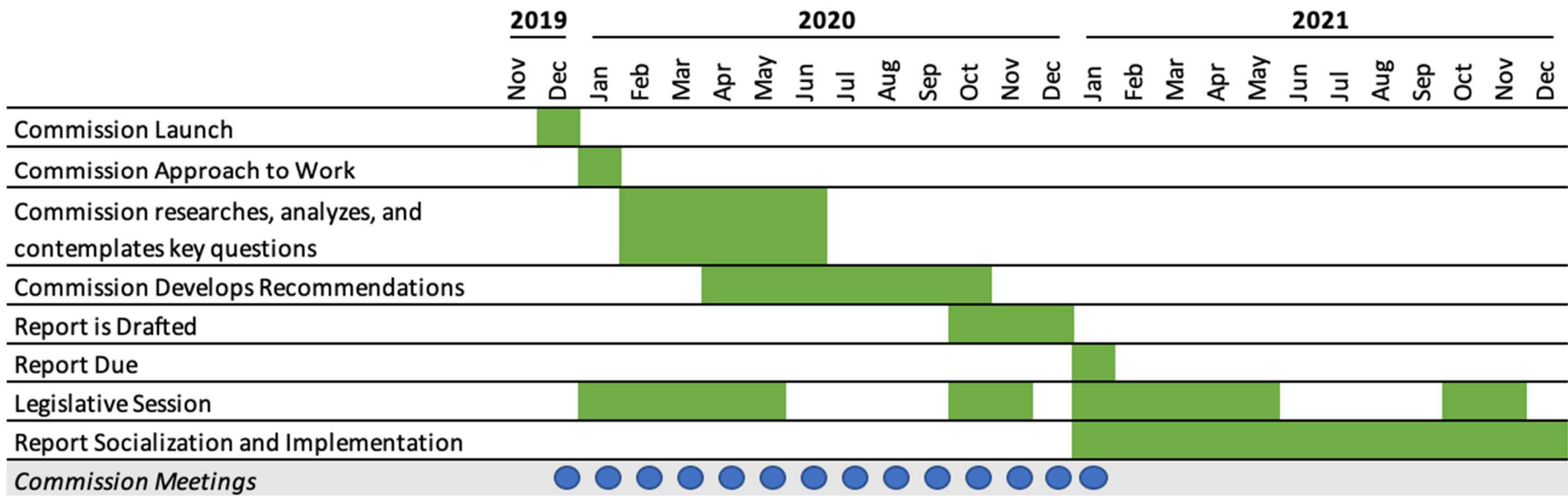
# Guiding Principles (Revised)

These Guiding Principles reflect the Commission's values and beliefs, guide how it operates, and lay a foundation for decision-making.

<b>High Quality ECEC is a Public Priority</b>	<ul style="list-style-type: none"><li>•It should be invested in as such as this is critical to our State's workforce, economy, and welfare of its residents.</li></ul>
<b>Promote Equity</b>	<ul style="list-style-type: none"><li>•We will endorse a system that promotes equitable outcomes for children, with intentional focus on race, ethnicity, culture, language, income, children's individual needs, and geography.</li></ul>
<b>Embrace Bold System-Level Changes</b>	<ul style="list-style-type: none"><li>•Everything is on the table, including how funding flows, how funding decisions are made, and who makes them, to better serve all children and families.</li></ul>
<b>Build Upon the Solid Foundation</b>	<ul style="list-style-type: none"><li>•We will build upon the successes of Illinois' past and current system, its commitment to a prenatal to five system, the lessons from other states, and the expertise and research in the field.</li></ul>
<b>Prioritize Family Perspectives, Needs, and Choices</b>	<ul style="list-style-type: none"><li>•We will prioritize families' perspectives, needs, and choices as we make recommendations to improve the system.</li></ul>
<b>Design for Stability and Sustainability</b>	<ul style="list-style-type: none"><li>•We recognize our system must provide funding stability for providers, educators, and staff across mixed delivery settings to better serve families.</li></ul>
<b>Require System Transparency, Efficiency, and Accountability</b>	<ul style="list-style-type: none"><li>•We see these as necessary conditions for all stakeholders, funding distributors, and funding recipients for any future ECEC funding structure.</li></ul>
<b>Recognize Implementation Realities</b>	<ul style="list-style-type: none"><li>•We will plan for meaningful change over a multi-year time horizon.</li></ul>

# Commission Timeline

The Commission will deliver its report by January 2021 with consideration to the Governor's budget address and legislative session timing.



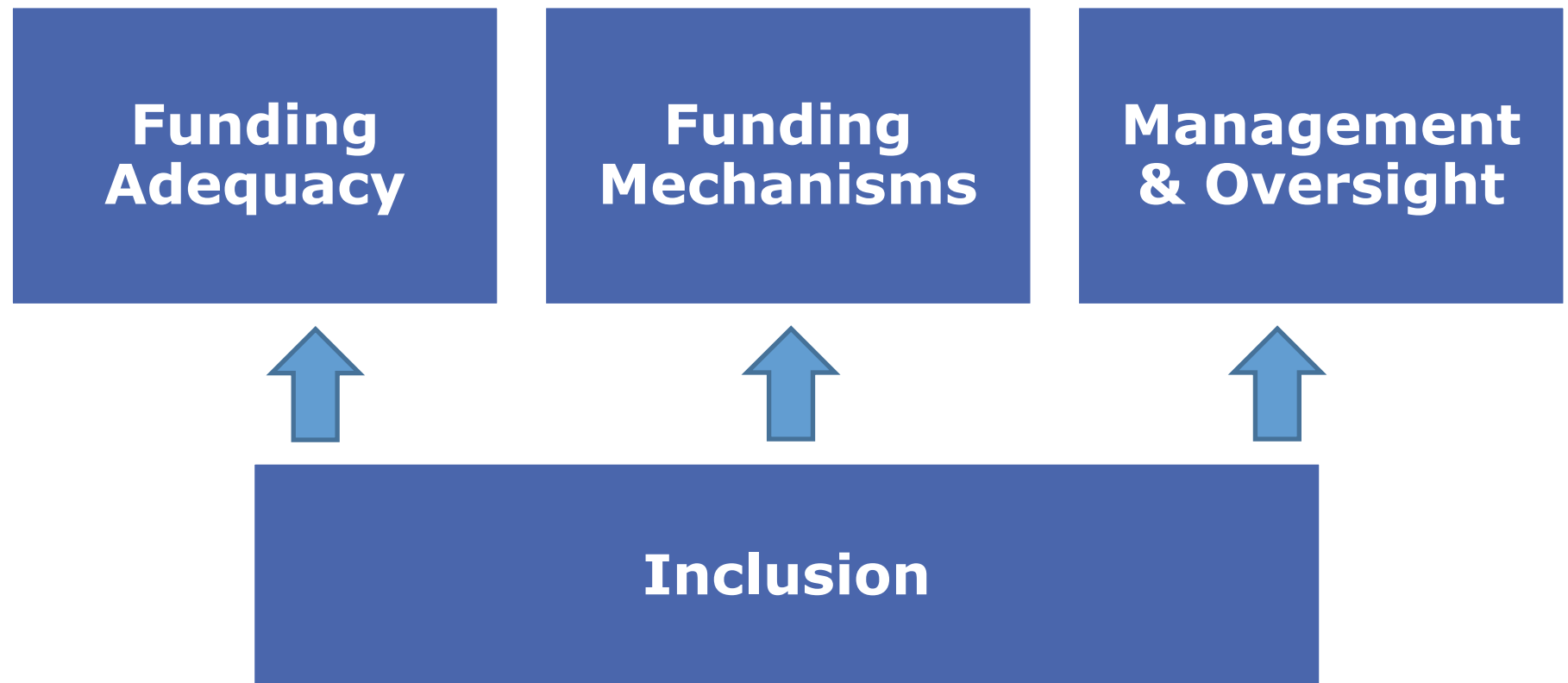
We will utilize Working Groups to address key questions

---



# We established these Working Groups

---



---

## Working Group Updates

---

# Funding Adequacy Working Group

# Funding Adequacy

## Working Group Members

---

- **Rey Gonzalez**, El Valor [Working Group Lead]
- **Jodi Scott**, ROE 33 [Working Group Lead]
- **Supt. Carmen Ayala**, Illinois State Board of Education
- **Sen. Christopher Belt**, 57th District
- **Rep. Thomas Bennett**, 106th District
- **Barbara Flynn Currie**, House Majority Leader (Ret.)
- **Craig Esko**, PNC Bank
- **Christina Hachikian**, Rustandy Center for Social Innovation
- **Evelyn Osorio**, SEIU Healthcare
- **\*Jenny Metcalf**, Illinois State Board of Education
- **\*Kate Ritter**, Consultant
- **\*Rebecca Dabbs MacLean**, SIU-E Early Childhood Center
- **\*Sylvia Puente**, Latino Policy Forum
- **\*Marc Staley**, Governor's Office of Management and Budget
- **\*Denise Castillo Dell Isola**, Irving Harris Foundation

\*External members



# Funding Adequacy

## Working Group Charge

---

**Goal:** *determine the cost of providing high quality ECEC services and how to fund over time*

### **Key Questions to Answer:**

- What is the **cost of providing high quality ECEC** to all families in Illinois?
- What should the **state process be for determining adequate resources across settings** for each program type?
- How much of the **cost should be covered** by the federal government, the state, local funding, and parent contributions?
- What is the **recommended timeline** to get to the state's full investment?

# Funding Adequacy Work Plan and Timeline

---

Approximate Timeline	Topics
February 4 (complete)	<ul style="list-style-type: none"><li>• Validate Work Plan and Timeline</li><li>• Review existing cost model</li><li>• Identify key drivers of "the number"</li></ul>
March	<ul style="list-style-type: none"><li>• Vet key drivers of the funding adequacy target</li><li>• Discuss potential process for phase-in to adequacy</li></ul>
April	<ul style="list-style-type: none"><li>• Envision end state funding sources</li><li>• Develop a timeline to get to full investment</li><li>• Determine prioritization of investments over that timeline</li></ul>
Jun - July	<ul style="list-style-type: none"><li>• Discuss and revise based on full Commission feedback</li></ul>

We will use the guiding principles toward the determination of "the number" and the recommended funding phase-in

---

***We have a lot of **evidence** of how current funding is not in alignment with the Commission's guiding principles***

High Quality ECEC is a  
Public Priority

Promote Equity

Embrace Bold System-  
Level Changes

Build Upon the Solid  
Foundation

Prioritize Family  
Perspectives, Needs,  
and Choices

Design for Stability  
and Sustainability

Require System  
Transparency,  
Efficiency, and  
Accountability

Recognize  
Implementation  
Realities

# How can we use the guiding principles toward the determination of "the number" and a recommended phase-in of funding?

---

## **Guiding Principle**

## **Understand How...**

### **Equity**

- Cost model inputs can assume equitable access to high-quality services, supporting equitable outcomes for children
- The phase-in of increased funding addresses current funding inequity

### **Family Perspectives**

- Family choice and need plays a role in determining adequate funding

### **Sustainability & Stability**

- Any phase-in of increased funding can allow for long term planning and funding predictability for providers
- Inputs to funding adequacy can serve to stabilize provider services

# How can we use the guiding principles toward the determination of "the number" and a recommended phase-in of funding?

---

## **Guiding Principle**

## **Understand How...**

### **Transparency**

- The "number" and the phase-in of any increase in funding is widely understood and reflective of stakeholder input

### **High Quality & Effectiveness**

- Critical inputs to the cost model reflect high-quality services (compensation, staffing, etc.)

### **Boldness & Ability to Implement**

- The timing of funding recommendations relates to the legislative session and budget cycle
- The phase-in of any increase in funding is reflective of what's possible in our state

# Funding Adequacy

## Our Immediate Next Steps

---

- Finish immersing ourselves in the cost modeling work done to date
- Begin to make key decisions on assumptions for the cost model

---

## Management & Oversight Working Group

# Management & Oversight Working Group Members

---

- **Robin Steans**, Advance Illinois [Working Group Lead]
- **Sen. Donald DeWitte**, 33rd District
- **Shauna Ejeh**, Illinois Action for Children
- **Phyllis Glink**, Irving Harris Foundation
- **Sec. Grace Hou**, Illinois Department of Human Services
- **Lori Longueville**, John A. Logan College
- **Jesse Ruiz**, Office of the Governor
- **\*Irma Snopek**, Illinois State Board of Education
- **\*Dan Harris**, Illinois Network of Child Care Resource & Referral Agencies
- **\*Cynthia Tate**, Governor's Office of Early Childhood Development
- **\*Tim Carpenter**, Council for a Strong America

\*External members



# Management & Oversight Working Group Charge

---

**Goal:** *recommend improved ECEC management structures and responsibilities, in alignment with Guiding Principles*

## Key Questions to Answer:

- Who sets the vision and maintains and updates policies and priorities for the overall ECEC system in Illinois?
- Who allocates funds and distributes them?
- Who holds recipients accountable for what they do with funding?



Management & Oversight is a key lever for actualizing this Commission's goal, in line with its guiding principles

---

When done well, Management and Oversight can...

- Improve **access to high quality services** in alignment with family needs
- Allocate resources to **promote equitable outcomes**
- Plan cohesively for a **sustainable ECEC system**
- Improve **system transparency, accountability, and efficiency**
- Promote **public trust** in the system

# Management & Oversight

## Work Plan and Timeline

---

Approximate Timeline	Topics
First Meeting (complete)	<ul style="list-style-type: none"><li>• Validate Work Plan and Timeline</li><li>• Understand current structures</li><li>• Begin decision framework development</li></ul>
March	<ul style="list-style-type: none"><li>• Review research available to inform recommendations, including other states</li><li>• Develop future system requirements</li></ul>
April	<ul style="list-style-type: none"><li>• Analyze future system options</li></ul>
May	<ul style="list-style-type: none"><li>• Discuss interdependencies with Funding Mechanism Working Group and validate potential recommendations</li></ul>
June	<ul style="list-style-type: none"><li>• Develop initial recommendation package and implementation considerations</li></ul>
July / August	<ul style="list-style-type: none"><li>• Respond to Commission feedback and inquiry</li></ul>

# Management & Oversight Decision Framework

---

***We need better Management & Oversight of Early Childhood Education & Care.***

***We are defining “better” in alignment with the Commission’s guiding principles.***

***Thus, we developed a framework to evaluate any proposed management & oversight functions that this working group formulates.***

# How can we use our guiding principles to evaluate current and future management & oversight systems?

---

<b>Guiding Principle</b>	<b>Understand How ECEC Management &amp; Oversight...</b>
<b>Accountability</b>	<ul style="list-style-type: none"><li>• Sets a unified vision and policy structure</li><li>• Defines, incentivizes, and rewards high-quality</li></ul>
<b>Equity</b>	<ul style="list-style-type: none"><li>• Incentivizes and encourages equitable distribution of and access to ECEC services across race, ethnicity, culture, language, income, geography, and children's needs</li></ul>
<b>Family Perspectives</b>	<ul style="list-style-type: none"><li>• Prioritizes community and family needs when setting and executing an ECEC vision</li><li>• Evaluates the system's success in meeting community and family needs</li></ul>
<b>Sustainability &amp; Stability</b>	<ul style="list-style-type: none"><li>• Enables funding recipients to engage in long-term planning</li><li>• Creates an environment of stability for providers, educators, and staff</li></ul>

# How can we use our guiding principles to evaluate current and future management & oversight systems?

---

<b>Guiding Principle</b>	<b>Understand How ECEC Management &amp; Oversight...</b>
<b>Transparency</b>	<ul style="list-style-type: none"><li>• Tracks, reports, and analyzes system-wide data</li><li>• Creates a navigable system for all families</li></ul>
<b>Efficiency</b>	<ul style="list-style-type: none"><li>• Supports timely use of funds and use of multiple funds to meet local needs</li></ul>
<b>High Quality &amp; Effectiveness</b>	<ul style="list-style-type: none"><li>• Defines high-quality</li><li>• Incentivizes high-quality</li></ul>
<b>Boldness &amp; Ability to Implement</b>	<ul style="list-style-type: none"><li>• Meets state and federal laws and policies while meeting the guiding principles to the fullest extent possible</li></ul>

# Management & Oversight

## Our Immediate Next Steps

---

- Synthesis of statewide and national research
- Begin developing the specific requirements of future management & oversight system

---

# Funding Mechanism Working Group



# Funding Mechanism

## Working Group Members

---

- **Elliot Regenstein**, Foresight Law + Policy [Working Group Lead]
- **Kristin Bernhard**, Ounce of Prevention Fund
- **Rep. Will Davis**, 30th District
- **Rochelle Golliday**, Cuddle Care
- **Sen. Andy Manar**, 48th District
- **Bela Mote**, Carole Robertson Center for Learning
- **Trish Rooney**, Fox Valley United Way
- **Jim Stelter**, Bensenville School District 2
- **\*Teresa Ramos**, Illinois Action for Children
- **\*Linda Saterfield**, Illinois Department of Human Services
- **\*Sara Shaw**, Illinois State Board of Education
- **\*Tom Layman**, Governor's Office of Early Childhood Development

\*External members

# Funding Mechanism Working Group Charge

---

**Goal:** *recommend improved funding mechanisms to move funding from various sources to recipients, in alignment with Guiding Principles*

## **Key Questions to Answer:**

- How can **funding mechanisms be improved** to support the Commission's guiding principles?
- What **funding innovations** could increase efficiency of existing funding?
- **How will funding move** from various sources to recipients?
- How will **recipients of funding be determined**?
- How do funding systems/structures **interact with accountability systems/structures**?

Funding mechanism = *The process by which money appropriated for ECEC services is distributed to fund ECEC services.*

---

Funding mechanisms in use for Illinois ECEC include:

- 1. Competitive bid**
- 2. Certificate/Voucher**
- 3. Tuition/Fee-for-service/Co-Pay**
- 4. Formula**
- 5. Non-appropriated funding**
- 6. Tax credits**

# Funding Mechanism

## Work Plan and Timeline

---

Approximate Timeline	Topics
February (complete)	<ul style="list-style-type: none"><li>• Validate Work Plan and Timeline</li><li>• Understand current mechanisms</li></ul>
March	<ul style="list-style-type: none"><li>• Review research available to inform recommendations, including other states</li><li>• Develop future system requirements</li></ul>
April	<ul style="list-style-type: none"><li>• Analyze future system options</li></ul>
May	<ul style="list-style-type: none"><li>• Discuss interdependencies with Management &amp; Oversight Working Group and validate potential recommendations</li></ul>
June	<ul style="list-style-type: none"><li>• Develop initial recommendation package and implementation considerations</li></ul>
July / August	<ul style="list-style-type: none"><li>• Respond to Commission feedback and inquiry</li></ul>

# Decision framework for Funding Mechanisms

---

***We have a lot of evidence that we need to improve funding mechanisms for Illinois ECEC.***

***This improvement should be connected to the Commission's guiding principles.***

***Thus, we developed a framework to evaluate any proposed funding mechanisms this working group formulates.***

# How can we use our guiding principles to evaluate current funding mechanisms and future options?

---

<b>Guiding Principle</b>	<b>Understand How Funding Mechanisms...</b>
<b>Accountability</b>	<ul style="list-style-type: none"><li>• Are monitored and overseen</li></ul>
<b>Equity</b>	<ul style="list-style-type: none"><li>• Result in distribution of and access to services across race, ethnicity, culture, language, income, geography, and children's needs</li></ul>
<b>Family Perspectives</b>	<ul style="list-style-type: none"><li>• Result in service access that is responsive to community-level and families' needs</li></ul>
<b>Sustainability &amp; Stability</b>	<ul style="list-style-type: none"><li>• Allow for long term planning for recipients</li><li>• Create an environment of stability for providers, educators, and staff</li></ul>

# How can we use our guiding principles to evaluate current funding mechanisms and future options?

---

<b>Guiding Principle</b>	<b>Understand How Funding Mechanisms...</b>
<b>Transparency</b>	<ul style="list-style-type: none"><li>• Are understandable and accessible to those eligible to access the funding</li></ul>
<b>Efficiency</b>	<ul style="list-style-type: none"><li>• Result in timely receipt of funds</li><li>• Allow for all funds to be used together to meet local needs</li></ul>
<b>High Quality &amp; Effectiveness</b>	<ul style="list-style-type: none"><li>• Support and incentivize high-quality, effective service delivery</li></ul>
<b>Boldness &amp; Ability to Implement</b>	<ul style="list-style-type: none"><li>• Relate to state and federal laws and policies</li><li>• Require administrative supports</li><li>• Promote innovation</li></ul>

# Funding Mechanism

## Our Immediate Next Steps

---

- Synthesis of statewide and national research
- Begin developing the specific requirements of future funding mechanisms



---

# Inclusion Working Group

# Inclusion Working Group Members

---

- **Pat Chamberlain**, Elgin Area School District U46 (Ret.) [Working Group Lead]
- **Emma Ahiable**, Springfield District 186
- **George Davis**, Rockford Human Services (Ret.)
- **Cathy Mannen**, Illinois Federation of Teachers
- **Rep. Aaron Ortiz**, 1<sup>st</sup> District
- **\*Karen Berman**, Ounce of Prevention Fund
- **\*Ann Freiberg**, Illinois Department of Human Services
- **\*Kristy Doan**, Illinois State Board of Education
- **\*Donna Emmons**, Illinois Head Start Association
- **\*Benny Delgado**, Leaps & Bounds Family Services, Inc.
- **\*Lori Orr**, Governor's Office of Early Childhood Development

\*External members

# Inclusion Charge

---

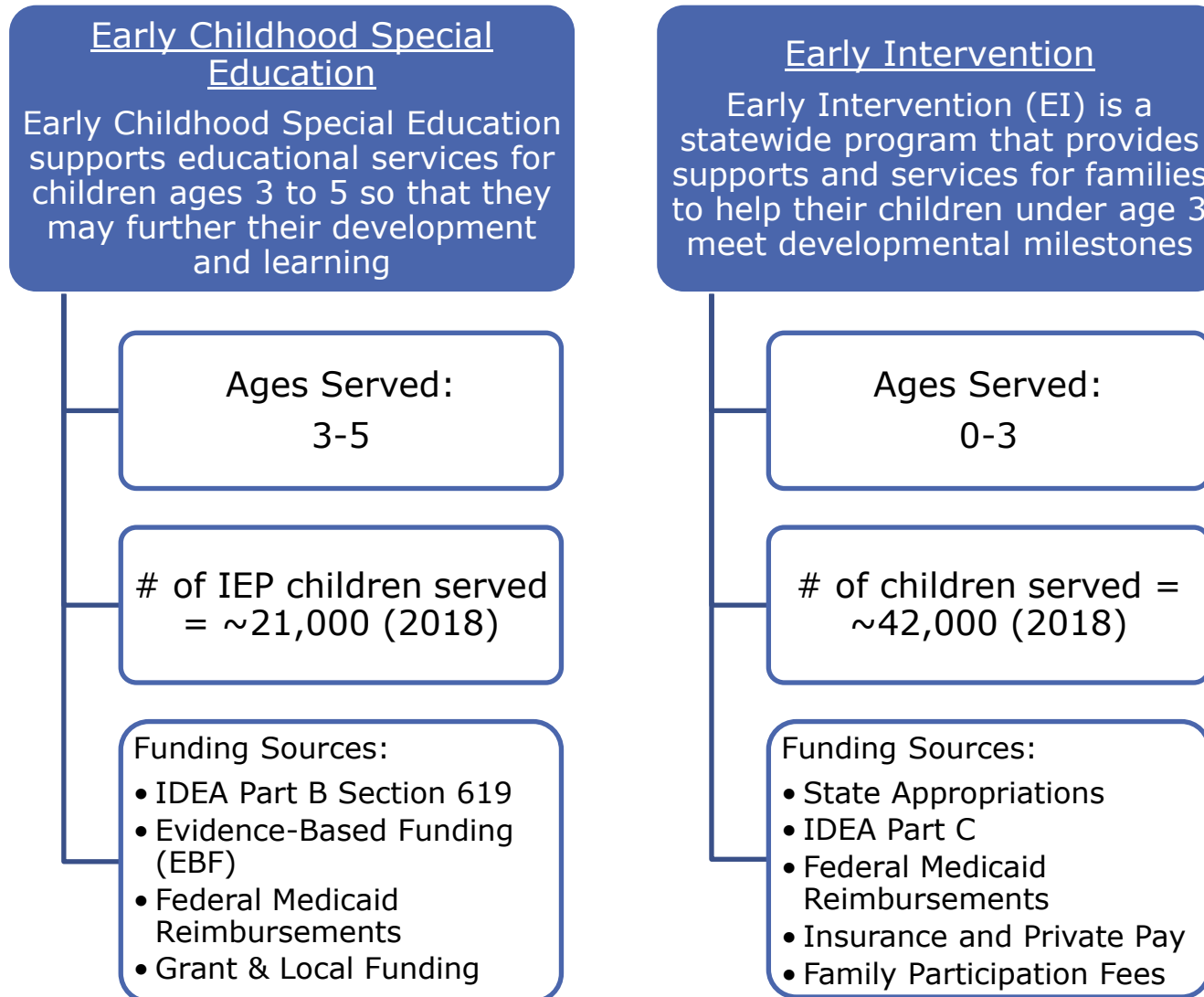
**Goal:** *Inform the work of other Working Groups and the full Commission as it relates to children receiving special education and early intervention services, in alignment with the Commission's guiding principles*

## **Key Questions to Answer:**

- What is the cost for identifying students in need of special services and for serving children in inclusive environments? (Funding Adequacy)
- How should funding sources particular to Special Education / Early Intervention interact with other funding sources? (Funding Mechanism)
- How will funding particular to Special Education/ Early Intervention move from various sources to recipients? (Funding Mechanism)
- How do we ensure funding promotes seamless supports from identification to receiving services? (All three working groups)
- How do we ensure transparency, efficiency, effectiveness, and greater coordination in the system to enable state-level and community-level planning and accountability?

# What services are part of the Inclusion Working Group?

---



# Inclusion Working Group Work Plan and Timeline

---

Approximate Timeline	Topics
February (completed)	<ul style="list-style-type: none"><li>• Validate Work Plan and Timeline</li><li>• Review current modeling and understand current mechanisms, structures</li></ul>
March	<ul style="list-style-type: none"><li>• Opine on relevant cost modeling inputs</li><li>• Develop future M&amp;O / funding mechanism system requirements</li><li>• Review research available to inform recommendations, including other states</li></ul>
April	<ul style="list-style-type: none"><li>• Analyze future system options</li></ul>
May - July	<ul style="list-style-type: none"><li>• Discuss interdependencies with other working groups and validate potential recommendations</li></ul>

# Decision framework for Inclusion Working Group

---

***This working group will ensure that any recommended improvements will be “better” for special education and early intervention children, families, and providers.***

***We will use the Commission’s guiding principles as we evaluate options that are “better” for special education and early intervention children, families, and providers.***

# How can we use our guiding principles to evaluate the current system and future options related to special education and early intervention?

---

<b>Guiding Principle</b>	<b>Understand how special education and early intervention funding...</b>
<b>Accountability</b>	<ul style="list-style-type: none"><li>• Is governed, monitored, and overseen</li><li>• Promotes continuous improvement on high quality</li></ul>
<b>Equity</b>	<ul style="list-style-type: none"><li>• Results in distribution of and access to inclusion services across race, ethnicity, culture, language, income, geography, and children's needs</li></ul>
<b>Family Perspectives</b>	<ul style="list-style-type: none"><li>• Results in service access that is responsive to community-level and families' needs</li></ul>
<b>Sustainability &amp; Stability</b>	<ul style="list-style-type: none"><li>• Allows for long-term planning</li><li>• Creates an environment of stability for providers, educators, and clinicians</li></ul>
<b>Transparency</b>	<ul style="list-style-type: none"><li>• Is understandable and accessible to families' seeking to access resources</li></ul>

# How can we use our guiding principles to evaluate the current system and future options related to special education and early intervention?

---

<b>Guiding Principle</b>	<b>Understand how special education and early intervention funding...</b>
<b>Efficiency</b>	<ul style="list-style-type: none"><li>• Results in timely receipt of funds</li><li>• Is leveraged to create a streamlined process for families to access services</li></ul>
<b>High Quality &amp; Effectiveness</b>	<ul style="list-style-type: none"><li>• Supports and incentivizes high-quality, effective service delivery</li></ul>
<b>Build on Solid Foundation</b>	<ul style="list-style-type: none"><li>• Works within the mixed delivery ECEC system to meet families where they are</li></ul>



# Inclusion

## Our Immediate Next Steps

---

- Synthesis of statewide and national research
- Begin to make recommendations for adequacy cost model inputs
- Begin to outline requirements of any new funding mechanism and management & oversight function as it relates to inclusion

---

# Stakeholder Engagement Planning

# This Commission is here because of the public's input

---

Stakeholder and community feedback forms the foundation for the Commission's charge

Much of the work done to date has included stakeholder engagement

- Early Learning Council reports on Early Childhood Block Grant and Mixed Delivery System
- Preschool Development Grant Needs Assessment and Strategic Plan
- Illinois Cost Model for Early Childhood Education and Care Services
- Erikson Institute's Illinois Risk & Reach Report
- Illinois has a long and recent history of early childhood stakeholder engagement
  - Example: FY19 Early Childhood Block Grant competition

# Stakeholder Engagement with the Commission will require...

---

- ✓ Synthesizing previous stakeholder feedback and input
- ✓ Identifying blind spots
- ✓ Seeking out additional input during all phases of the Commission's work

Stakeholder engagement is at the heart of our Commission's guiding principles; thus:

---

***We will look to the public and stakeholders for advice and innovation in formulating recommendations and will incorporate public and stakeholder advice into the final recommendations to the maximum extent possible.***

Our stakeholder engagement is successful if...

---

***ECEC advocates, providers, and families feel heard, valued, respected, prioritized, and involved in the Commission's work, and***

***They see their perspectives and recommendations for change reflected in the Commission's information gathering, deliberations, final recommendations, and blueprint for change.***

# Stakeholder Engagement Planning

---

- Review draft stakeholder engagement planning document
- Small group work

# Stakeholder Engagement Planning

---

Question: What would we change, add, remove to fit with our charge and working group work?

## Groups

1. “Who” / what perspectives to hear from and in what format(s)
2. “What” subject matters to hear about and in what format(s)
3. “Where” should we hear from and in what format + overall input on suggested timing/sequencing of the engagement



---

## Next Steps

# Commission Meeting Dates for 2020

---

Tuesday, March 10

Tuesday, April 14

Monday, May 11

Tuesday, June 16

Tuesday, July 14

Tuesday, August 18

Tuesday, September 15

Tuesday, October 13

Tuesday, November 10

Tuesday, December 8

# Next Steps

---

- ✓ Finalize stakeholder engagement plan
- ✓ Make progress in our working groups
- ✓ Prepare for stakeholder engagement activities

---

# **Public Comment**

---

# Thank You

