



# ISBE Updates

Carisa Hurley Davis  
Early Childhood Director

Equity • Quality • Collaboration • Community



## Agenda

- Budget Highlights
- Staffing Overview
- Smart Start Next Steps
- Upcoming Requests for Proposals

Equity • Quality • Collaboration • Community



## Budget Highlights

- **Early Childhood Block Grant \$75M**
  - 5,000 additional Preschool for All seats
  - Increase Prevention Initiative & Preschool for All Expansion services
- **Dolly Parton Imagination Library \$1.6M**
  - One age-appropriate book, per month, to each registered child from birth to age five in participating counties.
- **It Takes A Village Family of Schools \$3M**
  - Community of schools, programs, and academies that focuses on the child's academics as well as their social emotional needs.
  - ITAV pride themselves in educating the whole child.
- **Early Childhood Inclusion \$5 Million**
  - Early Choices –EC inclusion Project
  - Early Intervention Recommendations



# ISBE Early Childhood Team



## **DIRECTOR OF EARLY CHILDHOOD**

Carisa Hurley Davis holds a master's degree in education with a specialization in Early Childhood Program Administration from Loyola University/Erikson Institute and a bachelor's degree in Child and Family Services from Southern Illinois University at Carbondale. She has 35 years of experience working in early childhood programs at various capacities in center based and home visiting program options as well as an adjunct early childhood professor. In particular, her experience encompassed programing such as: family support services, family childcare, case management, head start, early head start, migrant head start, community-based organizations, private childcare and early childhood block programs. Additionally, Carisa previous owner/operator of a DCFS licensed center based childcare center serving children 3-12 years of age.

## **EARLY CHILDHOOD SUPERVISOR**

Norma Moore has been a Supervisor with the Early Childhood Department at the Illinois State Board of Education (ISBE) since 2021. She has worked in the field of Early Childhood for 18+ years. Prior to joining the ISBE Early Childhood team, Norma worked in various positions within the Early Childhood field including Teacher, Adjunct Faculty, Developmental Therapist, Head Start Early/ Early Head Start Director, and Director of Early Childhood Services managing and supporting families and children within the EC arena.





## **EARLY CHILDHOOD LEAD**

Nicole J. Craft has over 20 years of experience in the public service sector. She is an experienced leader in the field of early childhood development and has worked across the mixed service delivery system overseeing Head Start/Early Head Start programming as well as the Child Care Assistance Program. Prior to working with the State of Illinois, Nicole was employed with the City of Chicago Department of Family and Support Services and served as the Supervisor of Children Services Programs providing oversight of the City of Chicago's Child Care Assistance Program.

## **LEARNING RENEWAL - BRIDGING AND TRANSITIONS LEAD**

Jason Bednar worked for twelve years as an elementary school principal and two years as a director of curriculum and instruction. Jason joined the Illinois State Board of Education (ISBE) back in December 2021. While working with ISBE Jason skillfully works between two departments, Early Childhood and CTE& Innovation. Jason is currently working with Jump Start and Postsecondary Success.



**Equity • Quality • Collaboration • Community**



## **PRINCIPAL CONSULTANT**

Valerie Keller has been with the Illinois State Board of Education since November 2021. She has over thirty years of experience as a teacher, assistant principal and principal. Valerie has worked with Early Childhood for over nine years.

## **Early Childhood Budget & Data Coordinator- PRINCIPAL CONSULTANT**

Alicia Lynch-Deatherage has been with the Illinois State Board of Education for nineteen years. In this past year she was able to obtain her master's in Business Administration. Alicia will work with the Director of Early Childhood to provide fiscal oversight, budgeting, and monitoring of all the contractual agreements and grants. Additionally, she has experience with large scale budgets, project management, and data systems development.





## **PRINCIPAL CONSULTANT**

Kristina Doan has a background in working in the school system. She began as a speech pathologist before moving into a special education administrative role prior to joining the Illinois State Board of Education. Kristy has fifteen years experience in Special Education and has been with the Illinois State Board of Education for eight years.

## **PRINCIPAL CONSULTANT**

Jillian Davis has 15 years of experience in Early Childhood Education. She currently holds a Bachelor's degree in Early Childhood Education from Northern Illinois and Master's degree in Educational Leadership from Concordia University. Roles consisted of Preschool for All Teacher, Early Childhood Special Education Teacher, Early Childhood Student Teacher Mentor, Early Childhood Assistant Principal, and Early Childhood Principal.



**Equity • Quality • Collaboration • Community**





## **PRINCIPAL CONSULTANT**

Maddie McCullick graduated from the University of Illinois at Springfield in May 2019 with a Bachelor's Degree. At UIS she dual majored in Elementary Education and Educational Psychology and received a certificate in Child Advocacy Studies. Both before and during her time at UIS, Maddie served in various roles at Daycare Centers serving children ranging from six weeks to five years. After graduating, Maddie was a third-grade teacher for three years before joining the Early Childhood team at ISBE in August 2022. In December 2022, Maddie received her Master's Degree in Educational Literacy.

## **PRINCIPAL CONSULTANT**

Jennifer Metcalf (Jenny) has been working in education for over 23 years. Prior to joining the Illinois State Board of Education, Jenny served as a director of a childcare center serving children 6 weeks to 12 years old. In addition, Jenny has experience working in higher education in the area of student affairs.



Equity • Quality • Collaboration • Community



## **PRINCIPAL CONSULTANT**

Maddie Cullick graduated from the University of Illinois at Springfield in May 2019 with a Bachelor's Degree. At UIS she dual majored in Elementary Education and Educational Psychology and received a certificate in Child Advocacy Studies. Both before and during her time at UIS, Maddie served in various roles at Daycare Centers serving children ranging from six weeks to five years. After graduating, Maddie was a third-grade teacher for three years before joining the Early Childhood team at ISBE in August 2022. In December 2022, Maddie received her Master's Degree in Educational Literacy.

## **PRINCIPAL CONSULTANT**

Jennifer Metcalf (Jenny) has been working in education for over 23 years. Prior to joining the Illinois State Board of Education, Jenny served as a director of a childcare center serving children 6 weeks to 12 years old. In addition, Jenny has experience working in higher education in the area of student affairs.



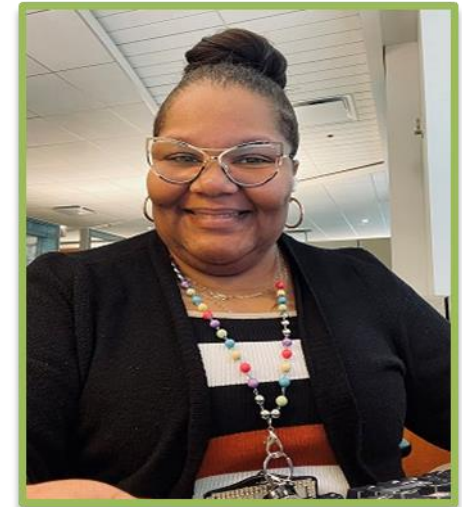
Equity • Quality • Collaboration • Community



## **PRINCIPAL CONSULTANT – Prevention Initiative**

Penelope Smith (Penny) has been a Principal Consultant in the Early Childhood Department at the Illinois State Board of Education (ISBE) since 2012. She has worked in the field of Early Childhood since 1993. Prior to joining the Illinois State Board of Education, Penny was the coordinator of a Prevention Initiative program. In addition, she has experience working in school districts and community-based organizations in various teacher, home visitor, and case management positions.

**PRINCIPAL CONSULTANT – Prevention Initiative** Tamara has supported children and families in Early Learning programs for more than 25 years. Tamara has served in multiple capacities in early learning working directly with children and families from program volunteer to director of programs. Tamara holds a Bachelor of Science in Family and Child Studies, Master of Science in Early Childhood Education with an emphasis in Infancy as well as a Master of Arts in Early Childhood Education with an emphasis in Curriculum. Tamara also holds a professional licensure in the area of Early Childhood Education and multiple Illinois Gateways to Opportunity Credentials in the areas of Early Childhood Education, Infant/Toddler and Illinois Director.



Equity • Quality • Collaboration • Community

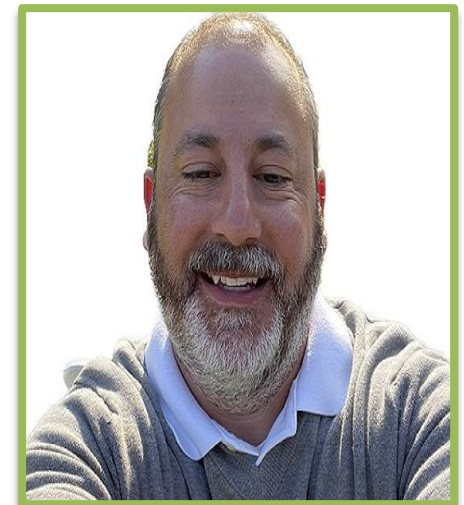


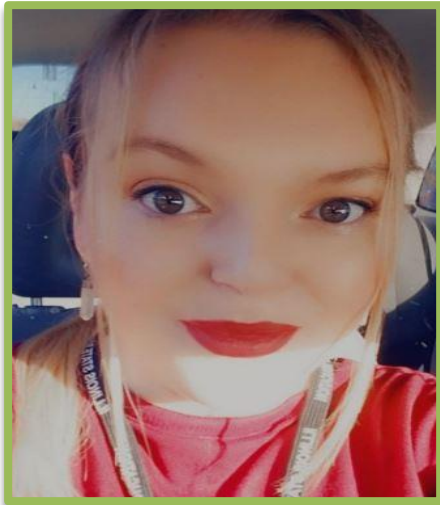
**PRINCIPAL CONSULTANT- Prevention Initiative Doula Services**

Ann Erickson received her B.S. from Allegheny College, Meadville, Pennsylvania. Her M.S.Ed. came from Duquesne University, Pittsburgh, Pennsylvania. Ann spent seven years working at the University of Vermont in the College of Education and Student Affairs teaching leadership development to the undergraduates and student development to graduate students. Life took Ann to Illinois where she spent 22 years working for the Jacksonville School District 117 in their Prevention Initiative program as a home visitor. Ann came to Illinois State Board of Education in April of 2022.

**PRINCIPAL CONSULTANT**

Christopher Maravilla is a principal consultant at Illinois State Board of Education. He has 19 years experience in Early Childhood Education. He specializes in projects, grant applications, and contractual agreements. Chris provides technical assistance along with other support services for the Early Childhood department to school personnel by way of written and verbal communications.





## **PROGRAM SPECIALIST II**

Audrey Grace Woods joined the Illinois State Board of Education in September 2021. She worked in the Human Resources department for nine months before transferring to the Early Childhood Department. As a Program Specialist II Audrey supports the department by answering phones, emailing school districts, and tracking various projects.

## **Open Positions**

Principal Consultant-Project Specialist – Pending Offer

Program Specialist II -Administrative Support – Pending Offer

Principal Consultant-Grant Reviewer- Interviewing

Principal Consultant – Data Coordination- interviewing



## Smart Start Next Steps

- FY24 Early Childhood Block Grant Request for Proposal Application Review/Award
- Prepare for FY25 Early Childhood Block Grant Request for Proposal
- Finalize and implement plans for Inclusion funding
- Prepare for implementation of the Dolly Parton Imagination Library



## Upcoming Request for Proposals

### Illinois State Board of Education:

- Regional Systems (ISBE)
- FY25 Early Childhood Block Grant (ISBE)

### ISBE & DHS partnership

- Raising the Bar Childcare Training and Technical Assistance\*
- Raising the Bar Childcare Planning Grant\*

*\*one time funding to support childcare centers wishing to apply for early childhood block grant funding.*

### Federal Opportunity:

- Preschool Development Grant Birth to 5 Renewal Grant



## Preschool Development Grant Birth through Five Planning Grant

### Next Steps

ISBE will host three Listening Sessions in July to gather feedback from the early childhood field regarding projects they would like to be included in the 2024 Preschool Development Grant Birth through Five application.

- July 13 - 2:00-3:30 p.m.
- July 20 - 10:00-11:30 a.m.
- July 27 - 5:30 -7:30 p.m.

Equity • Quality • Collaboration • Community